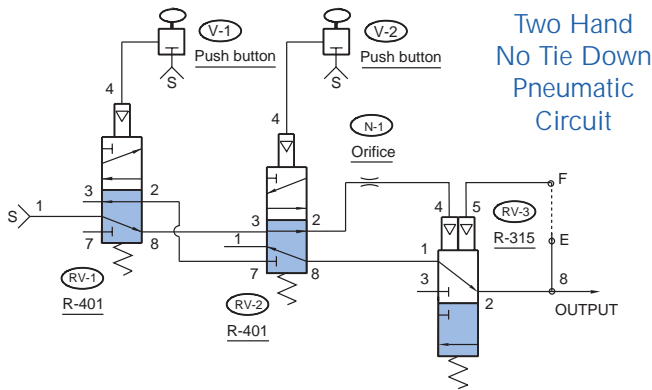


## STEP ONE

### Pneumatic Circuit

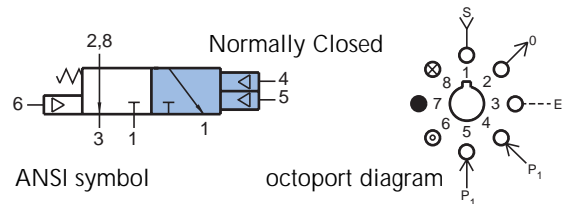
The first step in building a modular circuit is designing the pneumatic circuit using ANSI symbols.

Starting on page 265 we have a number of circuits utilizing Clippard Minimatic Modular Components. We have chosen the Two Hand No Tie Down Circuit for this demonstration.



## STEP TWO

### Specifications for the R-315 modular valve



### Octoport Diagrams

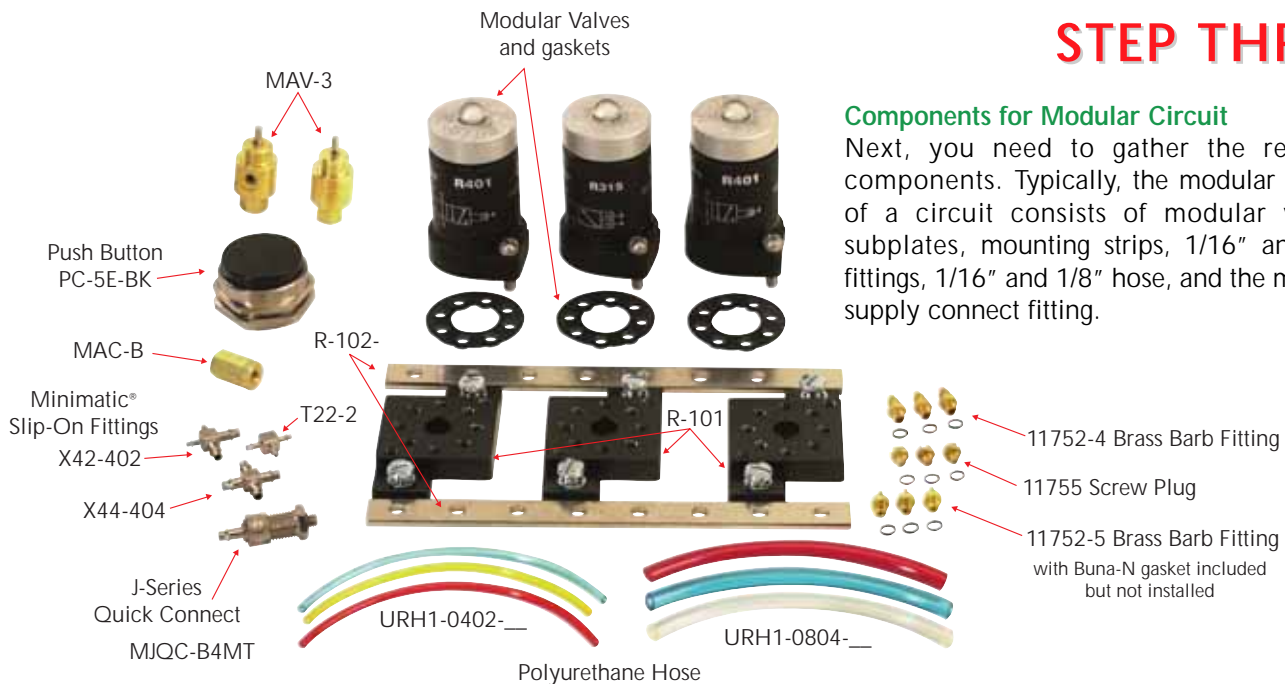
The next step is selecting the octoport diagram for each modular valve. Each Clippard modular valve (R-series) has its own unique octoport diagram which is shown to the right of the ANSI symbol.

See page 232 for clues for deciphering the Octoport port coding.

## STEP THREE

### Components for Modular Circuit

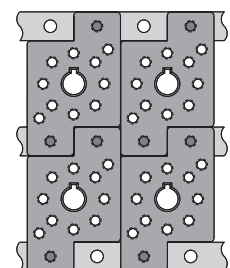
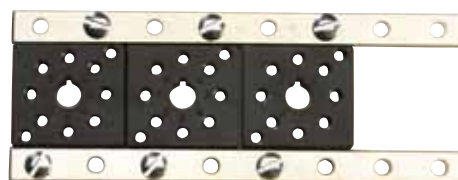
Next, you need to gather the required components. Typically, the modular portion of a circuit consists of modular valves, subplates, mounting strips, 1/16" and 1/8" fittings, 1/16" and 1/8" hose, and the main air supply connect fitting.



## STEP FOUR

### Mounting Strip and Subplate Assembly

The next step is assembling the mounting strips (R-102-) and subplates (R-101/R-101-M5).



Possible configurations for subplates